

August 15th, 2025 E-Newsletter

Block Party & Corn Feed

Past Event: Sunday, August 10th @ 10:30 a.m. - 2 p.m.

We held our annual Block Party & Corn Feed this past weekend. Many thanks to our Community Builders Committee for helping plan and organize this event. We also are so grateful for all the volunteers, donated hotdogs from Cloverdale, and sweet corn from Mary Graner's Sweetcorn! All the food, yard games, bounce house, live music by Dad Bod, and cornhole tournament made for a great day! We hope you enjoyed the event as much as we did.



Recent Announcements

Funerals

We extend our congregation's sympathy to the families of:

- Cynthia Wimer - her funeral was Thursday, August 7th at Parkway Funeral Service.
- Norman Ostboe - his funeral will be Saturday, August 16th at Trinity.

Please keep their families in your prayers.

Worship Indoors

*Beginning Wednesday, August 27th @ 6 p.m.
Sanctuary*

We will move all worship services back into the Sanctuary for the school year beginning Wednesday, August 27th.

Worship & Music Helpers Appreciation Dinner

*Past Event: Tuesday, August 5th
Fellowship Hall*

We held a Worship & Music Appreciation Dinner. We are so grateful for all the help that people dedicate weekly to our worship services. We couldn't do it without you!



Trinity Trivia

Each E-News, we will share some Trinity-related or scripture-related random facts. A question will be posed here and the answer revealed in the next E-News. Work together with your friends and family to try and figure it out!



Q. Which Altar Parament color represents "Hope"?

Blue

White

Purple

Red

Green

Results from Last E-News:

Q. How many words are in the "shortest verse" in the Bible? (In English translations).

A. 2.

The shortest verse in the Bible, commonly known in English translations, is "Jesus wept" (John 11:35), which is two words long and describes Jesus' reaction to the death of his friend Lazarus. Some translations, like the New International Version, have shorter versions of other verses, such as Job 3:2, which is simply "He said". However, John 11:35 is the most commonly recognized shortest verse in the Bible. In the original Greek text of the Bible, there are shorter verses, with Luke 20:30 ("καὶ τὸ δεύτερον," meaning "and the second") being the shortest at 12 Greek characters, followed by 1 Thessalonians 5:16 ("Πάντοτε χαίrete," meaning "rejoice always") at 14 Greek characters.

There were 23 people who answered this one correctly - congrats!

Check back next E-News for the answer and for a new question! You can submit any suggestions to Klarissa in the office. Thanks!

Children & Youth

Gracia Johnson - Youth and Children Ministry Coordinator; gjohnson@trinitybismarck.com, ext. 5

Camping Trip

Past Event: Friday, August 1st

Lake Metigoshe

Our high school youth had a great time on a camping trip up at Lake Metigoshe! They stayed at a rustic cabin with no electricity or running water, explored Lake Metigoshe on various boats, cooked over the campfire, enjoyed Pride Dairy ice cream, and finished off attending worship this morning at Metigoshe Lutheran led by camp staff from Metigoshe Ministries.



Register for Church School

Join us for a fun year of growing in faith! Church School (Sunday School) begins with Rally Day on September 3rd & 7th. It is open to kids age 3 to grade 5. Children must be 3 by August 1st for to start. Choose from 2 sessions: Sundays 9:35 —10:20 a.m. or Wednesdays 6:40—7:25 p.m. Register at trinitybismarck.com. See Gracia with questions.

Register for Church School

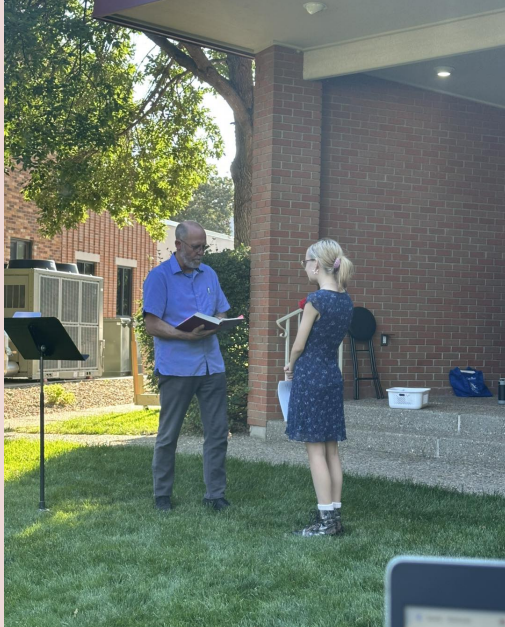


Church School Volunteers

We are looking for caring individuals to help teach Church School this year! If you are interested in being involved in this great ministry as we share the love of God with our kids, please contact Gracia.

Confirmation

Blessings to Evangelina (Angel) Abdallah who affirmed her faith and was confirmed at worship on Wednesday, August 13th.



Youth Happenings

We have many fun youth opportunities throughout the year! Information is also available on our website.

Click on images to enlarge. Questions? See Gracia.

Back to School Backpack Blessing

Sunday, August 17th @ 8:30 a.m. & 10:30 a.m.
During worship services

Wednesday, August 13 & Sunday, August 17 during worship services, students of all ages, teachers, bus drivers, aids, professors, etc. are invited to join us for worship and a special blessing as they head back to school. We'll have a fun tag to add to your backpack as a gift.

trinitylutheran
BACKPACK BLESSING

Wednesday, August 13 @ 6 p.m.
Sunday, August 17 @ 8:30 & 10:30 a.m.

Students of all ages, teachers, bus drivers, etc. are invited to join us for worship with a special blessing and tag to add to your backpack as a gift.

MIDDLE & HIGH SCHOOL
Mock-In!
BISMAN 6-12 GRADERS

Peace Lutheran Church
Friday, September 5,
2025 6-8pm

EVERYONE IS WELCOME,
INVITE YOUR FRIENDS!

JOIN US FOR:

- PIZZA
- GAMES
- CRAFTS
- AND FUN!

SIGN UP >>

RALLY DAY!

Wednesday, September 7
5:00 p.m. Supper
6:00 p.m. Worship
6:40 p.m. Rally Day Fun

Sunday, September 10
8:30 a.m. Worship
9:35 a.m. Rally Day Fun
10:30 a.m. Worship

- Congregational Art Project
- Games - Treats - Fun
- Kids - Go around the church to complete the challenges & earn a free meal to Texas Roadhouse!

Worship & Music Notes

Dr. Jason Thoms - Director of Worship & Music; thoms@trinitybismarck.com, ext. 3

Messiah

Trinity Lutheran Church will be hosting the 95th Annual Bismarck-Mandan Community Messiah performance on Sunday, November 30, 2025 at 7:00 pm. This year we will have a number of local area singers as our soloists including soprano, Lexi Birnbaum and bass, Andrew Baumann.

Rehearsals for Messiah will begin on Sunday, November 2nd from @ 4 p.m. - 6 p.m. and will continue each Sunday of November at the same time. This year we will be performing all of the Christmas portion and the Hallelujah Chorus! We invite all the singers in our community to join us this November for rehearsals and everyone else to attend the performance on November 30th! Click on the image to enlarge.

You are invited to join the choir for the
95th Annual Bismarck-Mandan Community Messiah
Dr. Jason Thoms, Conductor



You can bring your own score, or borrow one of ours!

Registration is November 2 at 3:30 pm

Rehearsals
November 2, 9, 16, and 23

Dress Rehearsal
November 29
7:00 to 9:30 pm

Performance
November 30 at 7:00 pm

more for information email
dr.jason.thoms@gmail.com or call
479-445-3795

Your Gifts

Brent Winkelman - Financial Director; winkelman@trinitybismarck.com, ext. 7

Electronic Giving - Trinity offers the option of Electronic Giving as a simple way to contribute. This would allow you the freedom from worry or concern whether you are out of town, on vacation or wondering how to budget your contributions. Giving forms are available in the office, at the Welcome Center or on Trinity's website.

At www.trinitybismarck.com, you can give electronically to the general fund, Capital Campaign and others. If you have questions or need assistance, please contact our Financial Director, Brent Winkelman at winkelman@trinitybismarck.com. Thank you again for your continued financial support.

Donate

Congregational Relationships

Ministry Opportunities

Ministry Opportunities at Trinity are available digitally. Please sign up to serve as Scripture Readers, Ushers, Greeters, Communion Servers and Tech online. **Sunday Readers should sign up by the Thursday before by 10 a.m.** (Holiday weeks may vary). Click below to sign up.

If you haven't served before or are not sure what type of opportunities are there for you, please fill out the "Ministry Opportunity Form." Click below and you will be contacted about serving.

Collection Items



Bismarck Lions Glasses

Drop off prescription glasses at the office. We will contact Bismarck Lions to come and collect them.



RMHC Pull Tabs

Pull tabs can be dropped off at the office or placed in these houses to be delivered to Ronald McDonald House.

Prayer List

Prayer is an essential part of our faith life. As part of the body of Christ we are called to pray for others who are sick, hurting or in need of healing. Names will be added only with the permission of the person being prayed for or an immediate family member.

If you would like your name added to this list, please contact the office or let one of the pastors know.

Please pray for: Dick, Wendy, Amy, Dennis, Rod, Jim, Hal, Melissa, Donna, Cathy, Marsha & Mike.

Pastoral Acts

Baptisms

Sutton Mae Milbridge
Noa Kaleohila 'ioku 'upa 'uwai Malina
Sven James Svihovec
Scottlyn Renee Heustis

Funerals

Betty Lenihan
Cynthia Wimer

Weddings

Gifts & Memorials

In memory of Donene Gjellstad given by Julie Leer (Memorial Fund).

In memory of Betty Lenihan given by Mark & Sheila Brunner, Randy & Cheri Horner (Memorial Fund).

In memory of Norman Ostboe given by Jan Sparrow (Memorial Fund).

Stephen Ministry

Submitted by: Karen Botine

When grieving comes before the loss...

You have noticed that a loved one just isn't "with it" anymore. You have seen changes -- physical, mental, emotional, or even social. You may ignore these signs for a while or find a multitude of explanations for them (and you may be right), but as these signs persist and even more indicators appear, you finally must admit that something is happening and it's not good. Sometimes the message is even clearer. The doctor says "four or five months".

And your life has changed. The loved one is still with you, but the relationship between you may be

changing or you find yourself thinking more about how you will feel when he/she is physically gone. When former President Ronald Reagan announced to the nation that he had been diagnosed with dementia, he called the time between the diagnosis and his eventual death as “the long goodbye.”

Do you grieve in anticipation of who or what you will be losing? Absolutely! Grief isn't something that only happens after a death. It can also hit when you realize you must accept that a loss is coming and there is nothing you can do to change the diagnosis. This may be a time when you could use support and comfort – from a friend, a counselor, or a support group.

If you are caring for or caring about someone during their “long goodbye”, consider attending the grief support group at Trinity. You are likely to meet others who have gone through what you are experiencing. They will also listen to what you need to say and give support and comfort. The grief support group meets in the Trinity Conference Room on the first Saturday of every month @ 10 a.m. – 11 a.m. You are welcome at any session and can attend as long as you find the sessions helpful to you. Who knows? You may also be able to support and comfort someone else.

Upcoming Events

Click on the images to enlarge.



Re-Entry Meal & Support

*1st Thursday of the month @ 6:30 p.m. - 8 p.m.
Fellowship Hall*

We hold a re-entry meal with time for fellowship and support for people who are in re-entry and their families once a month.

We meet on the first Thursday of every month. We will continue to partner with Ministry on the Margins for this project. If you would like to help with this project, contact Pastor Martha.

A flyer for the Re-Entry Meal and Support event. It features a background image of a group of people sitting around a table. The text includes: "ministry ON THE MARGINS" logo, "Free Meal" in a starburst, "trinitylutheran" logo with address "502 N 4th St. Bismarck, ND 58501 (701) 223-3560", "RE-ENTRY MEAL AND SUPPORT" in large bold letters, "1st Thursday of the month @ 6:30 -8 p.m.", "Families are welcome to join (18 yrs old and older)", and "All Are Welcome" in a circular badge.

A flyer for Scripture Circles. It features a background image of hands holding open Bibles. The text includes: "SCRIPTURE CIRCLES" in large yellow letters, "Come share in a transformative method of studying the Bible that is accessible to all! No prior experience or knowledge needed; led by scripture teacher U.S. Jones, II. Light supper will be served starting at 5:00 pm, study begins at 5:45pm. A free will offering will be collected, but the events are FREE.", "THURSDAYS FROM 5:00-8:00PM ON:", "JULY 17 @ McCabe United Methodist Church (1030 N 6th St, Bismarck)", "AUGUST 14 @ Missouri Slope North Campus Chapel (4916 N Washington St, Bismarck)", "SEPTEMBER 11 @ Lord of Life (1143 N 26th St, Bismarck)", "OCTOBER 9 @ Trinity Lutheran (502 N 4th St, Bismarck)", and a question mark icon with "Questions? Call 701-223-2236 for more information".

Lend a Hand Ministry

Next Meeting: Thursday, September 11th @ 9 a.m. - 12 p.m.

Break Room

Lend a Hand Ministry enjoys some coffee and fellowship before breaking out into small groups to help with projects that care for the building. No special skills are required. All are welcome!

They meet the 2nd Thursday of each month @ 9 a.m. - 12 p.m. in Fellowship Hall. Please contact our Facility Manager, John Brintnell, at brintnell@trinitybismarck.com if interested.

Lend a Hand Ministry



Bible Journaling

BIBLE JOURNALING IS A WAY TO COMBINE YOUR LOVE OF SCRIPTURE WITH YOUR CREATIVE TALENTS.

ALL ARE WELCOME:
GOOD SHEPHERD LUTHERAN CHURCH
3RD TUESDAY OF THE MONTH
5:30 - 7:00

Bible Journaling

3rd Tuesday of the month @ 5:30 p.m. - 7 p.m.
Good Shepherd Lutheran Church

Join us for Bible Journaling – where scripture & creative expression meet. We meet at Good Shepherd Lutheran Church on the 3rd Tuesday of the month @ 5:30 p.m. - 7 p.m. All ages are welcome! Come & check it out! See Gracia with questions.

Grief Support Group

1st Saturday of the month
@ 10 a.m.
in Conference Room

Contact Pastor Martha with questions at HarriSon@trinitybismarck.com

MEN'S GROUP

3rd Saturday of the month
@ 8 a.m.
in Fellowship Hall

- Faith
- Fellowship
- Breakfast
- All are Welcome

Contact Pastor Mark with questions at Narum@trinitybismarck.com

Church Musicians WANTED

We are always looking for instrumentalists & vocalists to help lead worship!

Interested?
Contact the church office to get involved.

THEOLOGY & COFFEE

Pastor Martha is starting a new study/discussion group that will discuss and debate various topics of faith and current topics important in our world today.

FRIDAYS | 10:00 AM
In the Conference Room

ALL ARE WELCOME

Partners in Ministry



ELCA Daily Discipleship

Click on the image to open the Daily Discipleship shared on

Missouri Slope

Check out available job openings here:

www.missourislope.com/careers

Check out their digital newsletter here:

<https://missourislope.com/hilltopper/>

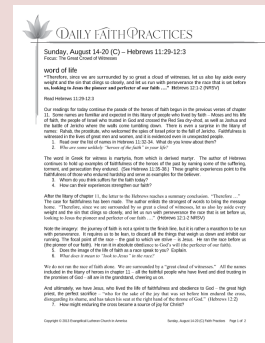
Ministry on the Margins

Ministry on the Margins is always looking for volunteers for their food pantry.

For information and to sign up visit:

www.ministryonthemargins.org

the ELCA's [website](http://www.elca.org)



Worship Schedule

Sundays

8:30 a.m. Traditional Worship

10:30 a.m. Blended Worship

Wednesdays

6 p.m. Contemporary Worship

We are happy to partner with Grace Lutheran in Driscoll.

Bulletins are posted on our [website](http://www.trinitybismarck.com) under [Bulletins](#) or click below:

[Bulletins](#)

Radio Broadcast

Sunday 8:30 a.m. Radio Broadcast on 1270 Super Talk or the [Listen Live](#) link on their [website](#). You can also click below:

[Listen Live](#)

Video Worship Links

Videos are posted on our [Facebook Page](#) and on our [YouTube Page](#).

- Congregational updates posted as necessary.
- Trinity To Go posted weekly by a pastor.
- Livestream available for worship services.



Head of Staff, Pastor Mark Narum
Pastor Martha HarriSon

701-223-3560
502 N 4th St. Bismarck, ND 58501

[Contact Us](#)

Trinity Lutheran Church | www.trinitybismarck.com



Trinity Lutheran Church | 502 N 4th St | Bismarck, ND 58501 US

[Unsubscribe](#) | [Update Profile](#) | [Constant Contact Data Notice](#)



Try email marketing for free today!