



*Nurturing a Living Faith
with Open Hearts
and Serving Hands*

TRINITY LUTHERAN CHURCH
502 NORTH 4TH STREET . BISMARCK, ND 58501 . 701.223.3560
MARK NARUM, PASTOR/HEAD OF STAFF;
MARTHA HARRISON, PASTOR
TRINITY@TRINITYBISMARCK.COM; WWW.TRINITYBISMARCK.COM

July 15th, 2025 E-Newsletter



***** Please also check our upcoming events located below in our event section! *****

Recent Announcements

Funerals

We extend our congregation's sympathy to the families of:

- Izaac Kroh - his funeral was at Trinity on Monday, July 14th.
- Evangeline Murschel - her funeral will be at Trinity on Saturday, July 19th @ 11 a.m.

Please keep their families in your prayers.

Plastic Bags

We put out a call and you responded! Thanks for all the donations of used plastic bags for our "Loaves and Fishes" ministry. Our cupboards are now full and we won't need any more for several months.

Lighting Project Update

The final project of the Capital Campaign is the installation of new lighting fixtures in the sanctuary. The fixtures have not shipped from the factory yet (the date of shipment continues to be pushed back). Frontier Electric is ready to install the fixtures as soon as they arrive.

New Church-to-Go Bags

Going away for the weekend? Pick up one of our Church-to-Go Bags. It includes a devotion, supplies for s'mores, and a fun activity! Bags can be found in the lobby/narthex or the church office. *Please note the activity in this bag is different than the one in the June bag.*

Blessing for the College Bound

We are offering a special blessing to college kids as they begin their school year. We will offer this prayer and blessing during worship on Sunday, August 10th at both the 8:30 and 10:30 services and Wednesday, August 13th at the 6 p.m. service.

We need your help!

If you or a loved one is in the hospital, please call the church office. If there is an emergency – call Pastor Mark or Pastor Martha's cell phones. In a world of medical facilities being stretched thin – they do not always note a person's congregation. When that happens your name does not show up when Klarissa checks the hospitals. This is an important part of our ministry so please help us out. Another note, if you or a family member are moved to a nursing home – neither the hospital nor the nursing home let the church know. The only way we find out is if a family member contacts us. Blessings All!

ELCA Missouri Cluster Women

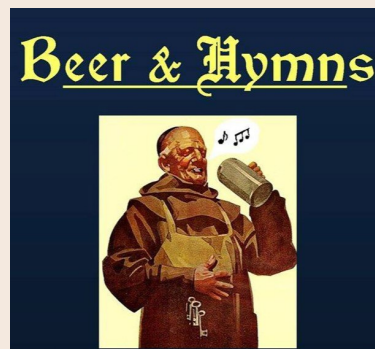
*Sunday, July 20th @ 12:30 p.m. - 3 p.m.
Missouri Slope*

Throughout ND, ELCA women are grouped together in what is called clusters. Ashley, Bismarck, Lincoln, Napoleon, Steele, Wilton, Wing, Wishek, Tuttle, Driscoll & Dawson cluster together in our area. In lieu of holding a meeting this past spring, they would like to share their talents with the community. The first project will be Sunday, July 20th, at Missouri Slope. MSLCC needs volunteers to help bring residents to and from chapel services on Sunday afternoons. They will meet at 12:30 p.m. and should be done by 3 p.m. Please contact Connie Isaak for any questions at (701) 391-2825.

Beer & Hymns

*Monday, July 21st @ 7 p.m. - 9 p.m.
Mandan Eagles*

The next Beer and Hymns is Monday, July 21st @ 7 p.m. - 9 p.m. at the Mandan Eagles. All are welcome! Click here for their [Facebook Page](#).



Trinity Trivia

We will be sharing some Trinity-related or scripture-related random facts! A question will be posed here and the answer revealed in the next E-News. Work together with your friends and family to try and figure it out!



Q. Approximately how many people can be seated in the pews of the sanctuary?

550 or less

650

Results from Last E-News:

Q. How many functional bathrooms are in Trinity? (Hint: not stalls)

A. 12


Check back next E-News for the answer and for a new question! You can submit any suggestions to Klarissa in the office. Thanks!

Children & Youth

Gracia Johnson - Youth and Children Ministry Coordinator; gjohnson@trinitybismarck.com, ext. 5

Youth Happenings

We have many fun youth opportunities throughout the year! Information is also available on our website. Click on images to enlarge. Questions? See Gracia.


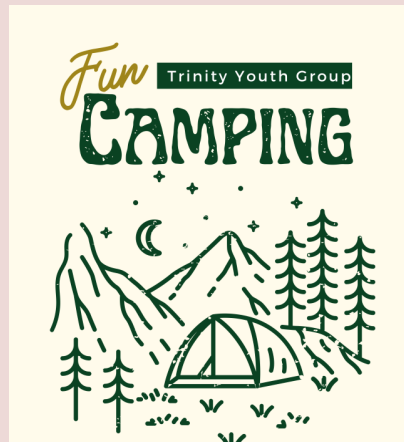


Camperships

Because we believe in the value of Bible Camp, Trinity Lutheran Church will provide scholarships of half the cost of camp to anyone enrolled in Trinity Church School, Confirmation, or Youth Group attending an ELCA Bible Camp. See Gracia for more info.

Camp of the Cross Summer Camps

Check out the options at Camp of the Cross near Garrison, ND has to offer this summer! There are great options for kids & youth of all ages! Scan the QR Code to go to the Camp of the Cross website.

Fun CAMPING

Trinity Youth Group

- Camping
- Boating
- Fun with friends
- Fishing
- And more
- Only \$20

Lake Metigoshe
August 1st-3rd

Sign Up Now

harrison@trinitybismarck.com

Stephen Ministry

Submitted by: Karen Botine

Grieving – only for people?

We most often associate grief with the loss of a person, especially someone close to us, and that's the grief that is deepest and has the greatest and longest effect on us. Grief can, however, be attached to other kinds of loss in our lives – any loss that affects our personal definition of who we are and how we live our lives. These other kinds of loss can happen at any time in life, but they seem to pile up as we get older.

Some people experience a period of grieving after retiring from a successful or rewarding career as they realize they don't have a reason to get up and get moving every morning, or that there's a difference between being Supervisor, or Chair, or Vice President of _____ and being the person who formerly held that title. Others, who have been physically active, are faced with the realization that 2025 was their last year to participate in McQuade, that they will never run in the Boston Marathon, or head to Iowa in late July for RAGBRAI*. Others grieve the declining eyesight that limits their ability to enjoy a whole day buried in the latest best-selling book, or the less-dependable memory that makes it necessary to write everything down. Still others must acknowledge that the home where they built a life as a family is now too much to handle and it's time to move to something smaller, easier to care for, and with fewer steps.

So – if you know someone who is going through this kind of grieving, how can you give support and

comfort? You do it the same way you would support and comfort someone who has lost a loved one. First, you listen. Then, you acknowledge their feelings without labeling these feelings as “good” or “bad”. You give the person your full attention as he/she expresses regret or frustration. You expect the person to share their feelings repeatedly, and you are patient with this need. As with other kinds of loss, being able to share feelings out loud with a “safe” person helps the healing process. Your part in the process is to be there and to be quiet (and always to pray for the person).

*For those who don't know – RAGBRAI is the Des Moines Register's Annual Great Bike Ride Across Iowa, an opportunity to camp out in small town parks and spend about a week riding bicycle between the Missouri and Mississippi rivers in late July when both the heat and humidity are usually above 90. Thousands of people do it every year.

Your Gifts

Brent Winkelman - Financial Director; winkelman@trinitybismarck.com, ext. 7

Electronic Giving - Trinity offers the option of Electronic Giving as a simple way to contribute. This would allow you the freedom from worry or concern whether you are out of town, on vacation or wondering how to budget your contributions. Giving forms are available in the office, at the Welcome Center or on Trinity's website.

At www.trinitybismarck.com, you can give electronically to the general fund, Capital Campaign and others. If you have questions or need assistance, please contact our Financial Director, Brent Winkelman at winkelman@trinitybismarck.com. Thank you again for your continued financial support.

Donate

Congregational Relationships

Ministry Opportunities

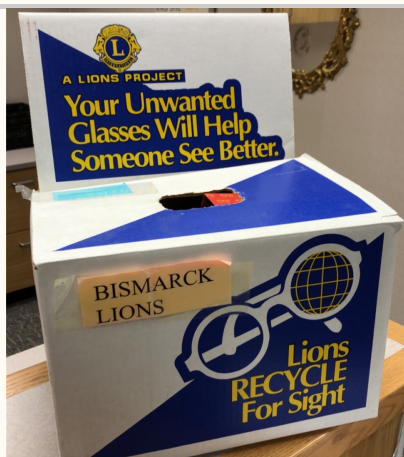
Ministry Opportunities at Trinity are available digitally. Please sign up to serve as Scripture Readers, Ushers, Greeters, Communion Servers and Tech online. **Sunday Readers should sign up by the Thursday before by 10 a.m.** (Holiday weeks may vary). Click below to sign up.

If you haven't served before or are not sure what type of opportunities are there for you, please fill out the "Ministry Opportunity Form." Click below and you will be contacted about serving.

Sign Up

Ministry Opportunity Form

Collection Items



Bismarck Lions Glasses

Drop off prescription glasses at the office. We will contact Bismarck Lions to



RMHC Pull Tabs

Pull tabs can be dropped off at the office

come and collect them.

or placed in these houses to be delivered to Ronald McDonald House.

Prayer List

Prayer is an essential part of our faith life. As part of the body of Christ we are called to pray for others who are sick, hurting or in need of healing. Names will be added only with the permission of the person being prayed for or an immediate family member.

If you would like your name added to this list, please contact the office or let one of the pastors know.

Please pray for: James Kalbfleisch, Dick, Wendy, Amy, Dennis, Rod, Jim, Hal, Melissa, Donna, Cathy & Kathryn.

Pastoral Acts

Baptisms

Funerals

Cathy Hanson
Izaak Kroh

Weddings

Gifts & Memorials

In memory of Cathy Hanson given by Norman & Darlene Ostboe (Memorial Fund).

In memory of Beverly Blumhagen given by Jeffrey & Jennifer Nast (Quilters Fund).

In memory of Terry Kristensen given by Kathleen Nordquist (Memorial Fund).

In memory of Wilbur Lippert given by Charles Krueger (Trust Endowment Fund); Jan Sparrow, Paula & Stephen Schilling, Marcus & Margaret Fiechtner, Wallace & Linda Jacobson, +additional cash given to family (Memorial Fund).

Upcoming Events

Click on the images to enlarge.



Potluck & Concert

Wednesday, July 30th
Potluck @ 6:45 p.m.
"Dad Bod" Concert @ 7 p.m.
Outside by Peace Chapel

Trinity is partnering with Bismarck Global neighbors and the Dakota West Arts Council to bring you this event:

- Join us for outdoor worship @ 6PM at Trinity Lutheran.
- After worship we will have a potluck - bring a dish to share with our friends from Global Neighbors.
- A concert with Dad Bod will start @ 7PM outdoors.



We will move indoors if there is inclement weather. All are welcome! Click here for [Facebook Event](#).

Block Party & Corn Feed

Sunday, August 10th @ 10:30 a.m. - 2 p.m.

Join us for our Annual Block Party & Corn Feed!

We begin with outdoor worship @ 10:30AM
Free activities and food after worship!



Block Party & Corn Feed

**SUNDAY, AUGUST 10
@ 10:30 AM - 2 PM**

- Worship
- Grilled Corn
- Activities/Bounce House
- **FREE** Family Event
- Cornhole Tournament
- All are welcome

trinitylutheran
BISMARCK, NORTH DAKOTA
Evangelical Lutheran Church in America
502 N 4TH ST.
BISMARCK, ND 58501

- * Grilled corn
- * Activities & games
- * Inflatable Bounce House
- * Cornhole tournament

All are welcome! We will move indoors if there is inclement weather. Click here for [Facebook Event](#).

Re-Entry Meal & Support

1st Thursday of the month @ 6:30 p.m. - 8 p.m.
Fellowship Hall

We hold a re-entry meal with time for fellowship and support for people who are in re-entry and their families once a month.

We meet on the first Thursday of every month. We will continue to partner with Ministry on the Margins for this project. If you would like to help with this project, contact Pastor Martha.



ministry
ON THE MARGINS

Free Meal

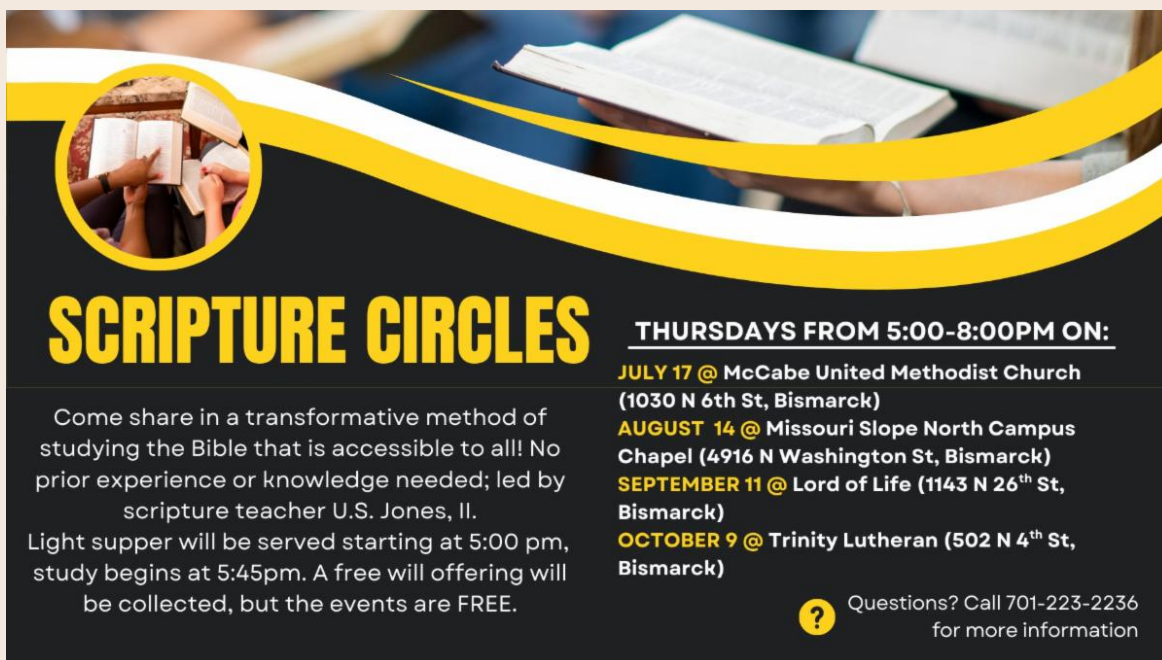
trinitylutheran
BISMARCK, NORTH DAKOTA
Evangelical Lutheran Church in America
502 N 4th St.
Bismarck, ND 58501
(701) 223-3560

RE-ENTRY MEAL AND SUPPORT

1st Thursday of the month
@ 6:30 - 8 p.m.

Families are welcome to join
(18 yrs old and older)

All Are Welcome



SCRIPTURE CIRCLES

Come share in a transformative method of studying the Bible that is accessible to all! No prior experience or knowledge needed; led by scripture teacher U.S. Jones, II. Light supper will be served starting at 5:00 pm, study begins at 5:45pm. A free will offering will be collected, but the events are FREE.

THURSDAYS FROM 5:00-8:00PM ON:

JULY 17 @ McCabe United Methodist Church
(1030 N 6th St, Bismarck)

AUGUST 14 @ Missouri Slope North Campus Chapel
(4916 N Washington St, Bismarck)

SEPTEMBER 11 @ Lord of Life (1143 N 26th St, Bismarck)

OCTOBER 9 @ Trinity Lutheran (502 N 4th St, Bismarck)

? Questions? Call 701-223-2236 for more information

Lend a Hand Ministry

Next Meeting: Thursday, August 14th @ 9 a.m. - 12 p.m.
Break Room

Lend a Hand Ministry enjoys some coffee and fellowship before breaking out into small groups to help with projects that care for the building. No special skills are required. All are welcome!

They meet the 2nd Thursday of each month @ 9 a.m. - 12 p.m. in Fellowship Hall. Please contact our Facility Manager, John Brintnell, at brintnell@trinitybismarck.com if interested.



trinitylutheran
BISMARCK, NORTH DAKOTA
Evangelical Lutheran Church in America

Lend a Hand Ministry



Bible Journaling

BIBLE JOURNALING IS A WAY TO COMBINE YOUR LOVE OF SCRIPTURE WITH YOUR CREATIVE TALENTS.

ALL ARE WELCOME:
GOOD SHEPHERD LUTHERAN CHURCH
3RD TUESDAY OF THE MONTH
5:30 - 7:00

Bible Journaling

3rd Tuesday of the month @ 5:30 p.m. - 7 p.m.
Good Shepherd Lutheran Church

Join us for Bible Journaling – where scripture & creative expression meet. We meet at Good Shepherd Lutheran Church on the 3rd Tuesday of the month @ 5:30 p.m. - 7 p.m. All ages are welcome! Come & check it out! See Gracia with questions.



Grief Support Group

1st Saturday of the month
@ 10 a.m.
in Conference Room

Contact Pastor Martha with questions
at HarriSon@trinitybismarck.com

trinitylutheran



MEN'S GROUP

3rd Saturday of the month
@ 8 a.m.
in Fellowship Hall

- Faith
- Fellowship
- Breakfast
- All are Welcome

Contact Pastor Mark with questions at Narum@trinitybismarck.com

trinitylutheran



Church Musicians WANTED

We are always looking for instrumentalists & vocalists to help lead worship!

Interested?
Contact the church office to get involved.

trinitylutheran



THEOLOGY & COFFEE

Pastor Martha is starting a new study/discussion group that will discuss and debate various topics of faith and current topics important in our world today.

FRIDAYS | 10:00 AM
In the Conference Room

ALL ARE WELCOME

trinitylutheran

Partners in Ministry



Missouri Slope

Check out available job openings here:

www.missourislope.com/careers

Check out their digital newsletter here:

<https://missourislope.com/hilltopper/>



Ministry on the Margins

Ministry on the Margins is always looking for volunteers for their food pantry.

For information and to sign up visit:

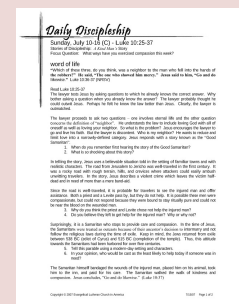
www.ministryonthemargins.org



Western North Dakota Synod
Evangelical Lutheran Church in America
God's work. Our hands.

ELCA Daily Discipleship

Click on the image to open the Daily Discipleship shared on the ELCA's [website](http://www.elca.org).





Worship Schedule

Sundays

8:30 a.m. Traditional Worship

10:30 a.m. Blended Worship

Wednesdays

6 p.m. Contemporary Worship

We are happy to partner with Grace Lutheran in Driscoll.

Bulletins are posted on our [website](#) under [Bulletins](#) or click below:

Bulletins

Radio Broadcast

Sunday 8:30 a.m. Radio Broadcast on 1270 Super Talk or the [Listen Live](#) link on their [website](#). You can also click below:

Listen Live

Video Worship Links

Videos are posted on our [Facebook Page](#) and on our [YouTube Page](#).

- Congregational updates posted as necessary.
- Trinity To Go posted weekly by a pastor.
- Livestream available for worship services.



Head of Staff, Pastor Mark Narum
Pastor Martha HarriSon

701-223-3560

502 N 4th St. Bismarck, ND 58501

Contact Us

How did you like this email?



Trinity Lutheran Church | www.trinitybismarck.com



Trinity Lutheran Church | 502 N 4th St | Bismarck, ND 58501 US

[Unsubscribe](#) | [Update Profile](#) | [Constant Contact Data Notice](#)



Try email marketing for free today!