

## July 1st, 2025 E-Newsletter

### Mission & Outreach Committee

*Past Event: Saturday, June 14th  
Ronald McDonald House*

Our project in June was to help the Ronald McDonald House. This group gathered to help pull weeds & spruce up the alley, front lawn & backyard. Your time and help was very much appreciated! If you are interested in finding out more information about this please contact Pastor Martha.



### Recent Announcements

#### Funerals

We extend our congregation's sympathy to the families of:

- Cathy Hanson - funeral will be Thursday, July 3rd @ 11:30 a.m. at Trinity.
- Jewel Hervey - graveside service was June 27th at the ND Veterans Cemetery.

Please keep their families in your prayers.

#### July 4th Weekend

The 10:30 service on Sunday, July 6th will be outside. Also, the office will be closed on Friday, July 4th. Have a blessed holiday!

#### Potluck & Concert

*Wednesday, July 30th. Potluck @ 6:45 p.m.; "Dad Bod" Concert @ 7 p.m.  
Outside by Peace Chapel*

Following outdoor worship on July 30th, we will have a potluck with our friends from Bismarck Global Neighbors @ 6:45 p.m. Then, there will be a concert with "Dad Bod" @ 7p.m. All outside. All are welcome. Bring a dish to share.

#### Missouri Slope Hillview Cup

Thursday, July 10th @ 9 a.m.

Prairie West Golf Course

### Reminder

There's still time to sign up for the Hillview Cup - Missouri Slope's annual golf tournament! With 3 hole-in-one challenges, you have a chance to win a 13 foot Scamp Trailer, a Whistling Straights golf package for two, and a Yamaha Wolverine Side X Side!

Join them July 10th at Prairie West for a fantastic day of golf, food, prizes - and most importantly, purpose. If you do sign up from Trinity we would love to see some photos! ☐ Click the button below to register or click here for the [Facebook Event](#).

## Win a 13 ft Scamp Trailer & More!



13'

Hillview Cup

MISSOURI SLOPE FOUNDATION

Registration

## Trinity Trivia

We will be sharing some Trinity-related or scripture-related random facts! A question will be posed here and the answer revealed in the next E-News. Work together with your friends and family to try and figure it out!



To start off, we would like to ask something that may seem relatively simple... Or, will you actually be surprised by the answer?

### Q. How many functional bathrooms are in Trinity? (Hint: not stalls)

Check back next E-News for the answer and for a new question! You can submit any suggestions to Klarissa in the office. Thanks!

## Children & Youth

Gracia Johnson - Youth and Children Ministry Coordinator; [gjohnson@trinitybismarck.com](mailto:gjohnson@trinitybismarck.com), ext. 5

## Youth Happenings

We have many fun youth opportunities throughout the year! Information is also available on our website. Click on images to enlarge. Questions? See Gracia.



### Camperships

Because we believe in the value of Bible Camp, Trinity Lutheran Church will provide scholarships of half the cost of camp to anyone enrolled in Trinity Church School, Confirmation, or Youth Group attending an ELCA Bible Camp. See Gracia for more info.


### Camp of the Cross Summer Camps

Check out the options at Camp of the Cross near Garrison, ND has to offer this summer! There are great options for kids & youth of all ages! Scan the QR Code to go to the Camp of the Cross website.



## Fun CAMPING

Trinity Youth Group



- Camping
- Boating
- Fun with friends
- Fishing
- And more
- Only \$20

Lake Metigoshe  
August 1st-3rd

Sign Up Now

[harrison@trinitybismarck.com](mailto:harrison@trinitybismarck.com)

# Service Ministry Spotlight

Matt, Sandy, Cristian, Finnegan & Parker McMerty



If you have attended the 8:30 Sunday worship services at Trinity, you may have noticed a family that consistently sits near the front right of the congregation. Like many faithful Lutherans, this family sits in what they have affectionately termed their "pew of destiny" or Pew 2A as they also refer to it. Matt & Sandy McMerty picked this pew on purpose with the intention of their kids being able to see the service when they were young and help keep them more engaged. However, it is also important to note that there have been instances where others have sat in "their pew" and they have then enjoyed worshipping from other locations at Trinity (apart from when bongos are involved as Matt is not a fan).

Now that you have a visual of which family is being referred to... You might recognize Matt as Trinity's current Council President. Both Matt & Sandy have served on committees and helped with activities from visioning to family engagement to council at Trinity. Sandy was the chair of the search committee for Pastor Paul and Matt was the chair for Pastor Martha. Sandy has also used her layout skills to help design Giving Intent cards, develop promotional materials for pastoral search efforts, youth group t-shirts, etc. For a few years, Sandy and her daughter, Parker, also enjoyed prepping Bible School materials.

Matt started attending Trinity as a 4th grader in 1981 after his family moved to Bismarck from Minot and Sandy started attending in 1996. Her membership was made official later after Pastor Steve Sathre gave her a certificate stating she was an official member because she didn't know she was supposed to transfer membership from her previous church, Grace Lutheran in Driscoll, ND.

Matt was confirmed by Pastor Steve who later also married Matt & Sandy at Trinity in 1999. All 3 of the McMerty kids were baptized at Trinity and 2 were confirmed.

The McMerty family founded The Gifted Bean coffee shop in the Bismarck Veterans Memorial Public Library. The concept for this came from Matt & Sandy wanting to show that individuals with disabilities (or unique talents as they like to say) can be included in anything, including valuable work. They believe that Trinity was great at including their son with Down syndrome in all church activities. Trinity worked with them, so he had an aid, and they saw the same care with other families in similar situations.



To quote Sandy's favorite Bible verse: *"All our steps are ordered by the Lord; how then can we understand our own ways?"* - Proverbs 20:24 (NRSVue).

Thank you to the McMerty family for being faithful members at Trinity over the years and for their continued involvement throughout the community!

## Your Gifts

Brent Winkelman - Financial Director; [winkelman@trinitybismarck.com](mailto:winkelman@trinitybismarck.com), ext. 7

**Electronic Giving** - Trinity offers the option of Electronic Giving as a simple way to contribute. This would allow you the freedom from worry or concern whether you are out of town, on vacation or wondering how to budget your contributions. Giving forms are available in the office, at the Welcome Center or on Trinity's website.

At [www.trinitybismarck.com](http://www.trinitybismarck.com), you can give electronically to the general fund, Capital Campaign and others. If you have questions or need assistance, please contact our Financial Director, Brent Winkelman at [winkelman@trinitybismarck.com](mailto:winkelman@trinitybismarck.com). Thank you again for your continued financial support.

## Congregational Relationships

### Ministry Opportunities

Ministry Opportunities at Trinity are available digitally. Please sign up to serve as Scripture Readers, Ushers, Greeters, Communion Servers and Tech online. **Sunday Readers should signup by the Thursday before by 10 a.m.** (Holiday weeks may vary). Click below to sign up.

If you haven't served before or are not sure what type of opportunities are there for you, please fill out the "Ministry Opportunity Form." Click below and you will be contacted about serving.

[Sign Up](#)[Ministry Opportunity Form](#)

### Collection Items



#### Bismarck Lions Glasses

Drop off prescription glasses at the office. We will contact Bismarck Lions to come and collect them.



#### RMHC Pull Tabs

Pull tabs can be dropped off at the office or placed in these houses to be delivered to Ronald McDonald House.

### Trinity Rental Spaces

Jennifer and Joshua Essler held a beautiful Baby Sprinkle in the Community Center to welcome their second child. If you would like to rent some space at Trinity, contact Klarissa in the office to get more information. We also love when you share your photos with us as well! Congrats and blessings to the Essler family!



## Prayer List

Prayer is an essential part of our faith life. As part of the body of Christ we are called to pray for others who are sick, hurting or in need of healing. Names will be added only with the permission of the person being prayed for or an immediate family member.

If you would like your name added to this list, please contact the office or let one of the pastors know.

**Please pray for:** James Kalbfleisch, Dick, Wendy, Amy, Dennis, Rod, Jim, Hal, Melissa, Donna, Chris, Darrell, Kathy & Mikayla.

## Pastoral Acts

### Baptisms

Stetson Luke Walther

### Funerals

Wilbur Lippert  
Jewel Hervey

### Weddings

## Gifts & Memorials

**In memory of Eugene & Yvonne Kroll** given by Tim & Kirsten McIntyre (Memorial Fund).

**In memory of Beverly Blumhagen** given by John & Debra Nelson (Quilters & Loaves & Fishes Funds); Kim & Gail Christianson, Joel & Jennifer Bird, Kirsten & Tim McIntyre, James & Shirley Borg, Michael & Renae Baltzer, Richard Lucas, Jan Sparrow, "Homemakers," John & Hazel Haberlock, Harold & Sheila Peterson, Marcus & Margaret Fiechtner, Nicole & Jeff Mindt, Joyce Wiper, Bramblee Bird (Quilters Fund); D.E. & J.D. Mock, Susan & Wayne Triska, Patrick & Carolyn Blake, Barbara Reister, Bit & Charlie Holt, Carlene Fitterer, Gregory & Doris McKay, Lenore Bradford, Denise Leapaltd-Johnson (Loaves & Fishes Fund); Roland & Dorine Wiedrich, Carl & Thelma Kvanig, Steve & Michele Leidholm, Lois Swenson, Sandra Siemers, Stephen & Paula Schilling, Arlene Schamberger (Memorial Fund).

**In memory of Terry Kristensen** given by Lois & Grant Kalbfleisch (Music Fund); Harley & Margaret Swenson, Sherry Feist, Wanda Benz, Mark & Claudia Thompson, Sherwin & Cathy Nelson, Kevin Bjork, Joan Inman, Doug & Joan Mork, Wayne & Ellen Jacobson, Donald & Stephanie Borud, Michael & Renae Baltzer, Karen & Steven Latham, Kadon & Michelle Hintz, James & Barbara Johnson, Gregory & Nancy Bjerke, Stephen & Paula Schilling, Karen & Joel Anderson, Mark & Constance Swary, Jan Sparrow, Kirsten & Timothy McIntyre, Ramona Wanner (Memorial Fund).

*Memorials for Wilbur Lippert will be shared in the next E-News.*

## Upcoming Events

*Click on the images to enlarge.*



### Re-Entry Meal & Support

*1st Thursday of the month @ 6:30 p.m. - 8 p.m.  
Fellowship Hall*

We hold a re-entry meal with time for fellowship and support for people who are in re-entry and their families once a month.

We meet on the first Thursday of every month. We will continue to partner with Ministry on the Margins for this project. If you would like to help with this project, contact Pastor Martha.

## Lend a Hand Ministry

*Next Meeting: Thursday, July 10th @ 9 a.m. - 12 p.m.  
Break Room*

Lend a Hand Ministry enjoys some coffee and fellowship before breaking out into small groups to help with projects that care for the building. No special skills are required. All are welcome!

They meet the 2nd Thursday of each month @ 9 a.m. - 12 p.m. in Fellowship Hall. Please contact our Facility Manager, John



## Bible Journaling

3rd Tuesday of the month @ 5:30 p.m. - 7 p.m.  
Good Shepherd Lutheran Church

Join us for Bible Journaling – where scripture & creative expression meet. We meet at Good Shepherd Lutheran Church on the 3rd Tuesday of the month @ 5:30 p.m. - 7 p.m. All ages are welcome! Come & check it out! See Gracia with questions.



## Partners in Ministry



### ELCA Daily Discipleship

Click on the image to open the Daily Discipleship shared on

## Missouri Slope

Check out available job openings here:

[www.missourislope.com/careers](http://www.missourislope.com/careers)

Check out their digital newsletter here:

<https://missourislope.com/hilltopper/>

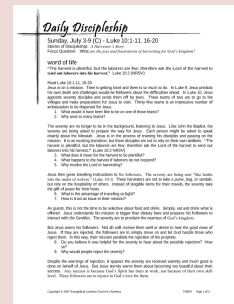
## Ministry on the Margins

Ministry on the Margins is always looking for volunteers for their food pantry.

For information and to sign up visit:

[www.ministryonthemargins.org](http://www.ministryonthemargins.org)

the ELCA's [website](#).



## Worship Schedule

### Sundays

8:30 a.m. Traditional Worship

10:30 a.m. Blended Worship

### Wednesdays

6 p.m. Contemporary Worship

We are happy to partner with Grace Lutheran in Driscoll.

Bulletins are posted on our [website](#) under [Bulletins](#) or click below:

Bulletins

## Radio Broadcast

Sunday 8:30 a.m. Radio Broadcast on 1270 Super Talk or the [Listen Live](#) link on their [website](#). You can also click below:

Listen Live

## Video Worship Links

Videos are posted on our [Facebook Page](#) and on our [YouTube Page](#).

- Congregational updates posted as necessary.
- Trinity To Go posted weekly by a pastor.
- Livestream available for worship services.



Head of Staff, Pastor Mark Narum  
Pastor Martha HarriSon

**701-223-3560**  
502 N 4th St. Bismarck, ND 58501

Contact Us

Trinity Lutheran Church | [www.trinitybismarck.com](http://www.trinitybismarck.com)



Trinity Lutheran Church | 502 N 4th St | Bismarck, ND 58501 US

[Unsubscribe](#) | [Update Profile](#) | [Constant Contact Data Notice](#)



Try email marketing for free today!