

Kris Schwab

Core Facility Solutions

9/24/2021 | 2 Photos



CORE FACILITY
— SOLUTIONS —

Trinity Lutheran Church of Bismarck

Weekly Report for Week Ending 9/24/2021

Section 1

Progress as of this week:

Final walkthrough for Straightway Construction was on Wednesday. There is a very minor punch list to complete.

City Air has worked hard to get the chiller piping done. They have done a great job. The piping runs from the boiler room through the floor of the nursery and up through the roof. It then runs over towards the chiller and down the north wall. There will be a chase build around the piping in the nursery to conceal it. Dark brown metal (matching window frames) will cover the piping down the north wall once it is insulated. City Air also started evacuating refrigerant from the old chiller to begin replacing the unit. The old chiller is out of service, and we expect the its removal to start next week.

Johnson Controls is working on updates to the temperature control drawings. There was some equipment missed on the original design, but Core is taking care of it and there will be no change orders to the church. Core is checking into getting some cooling valves for the air handlers so that City Air can start piping them in while they are working on the chilled water piping.

Plan for next week:

Core will continue to work with all contractors to ensure project runs smoothly.

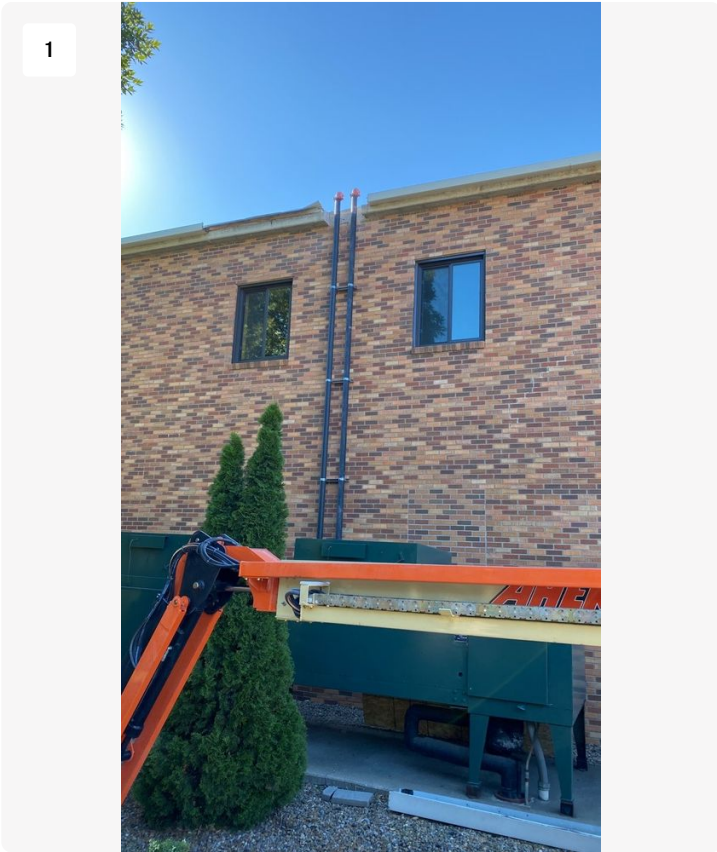
City Air Mechanical will be back to work on the chiller replacement.

Items of note:

Air handling equipment is in transit.

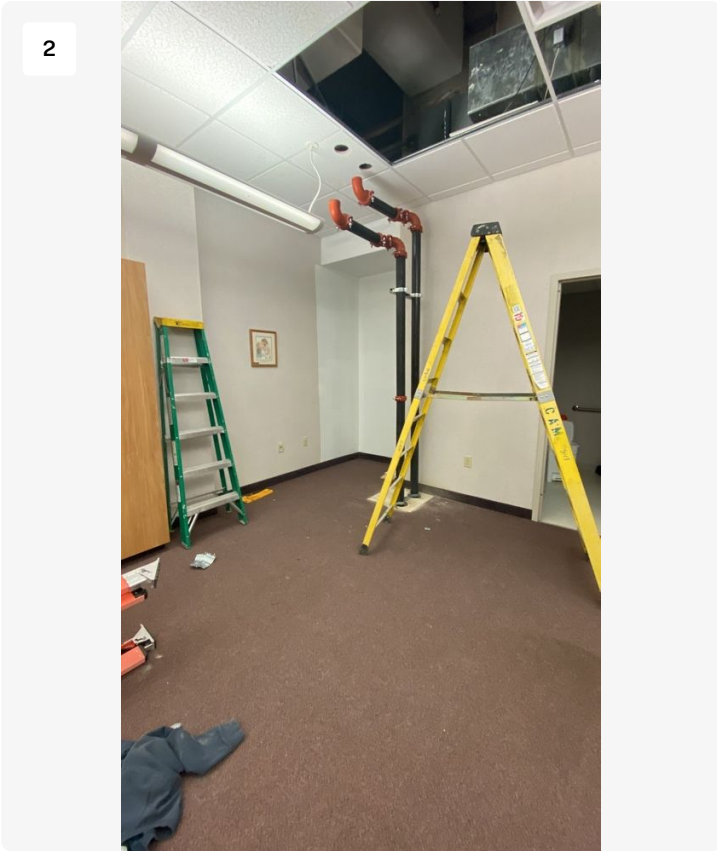
Core has received the fire alarm engineering from Johnson Controls/Simplex, we will start getting bids from electrical contractors. The city of Bismarck has preliminarily approved a multi-year phase in of the fire alarm system. They have requested that the kitchen be included in the first phase. The Council has asked Core to look at structural issues occurring in the 1930 building. Core has visited with a Structural Engineer onsite to start investigating the issues. Additionally a foundation and water mitigation contractor has also been consulted to look at the foundation and drainage issues.

Core has received pricing for fence around the chiller but waiting for the security gate for the Peace Chapel.



New chiller pipe routed down the north wall of the facility.

Project: Trinity Lutheran
Date: 9/21/2021, 10:53am
Creator: Kris Schwab



New chiller pipe routed through the Nursery.

Project: Trinity Lutheran
Date: 9/21/2021, 10:56am
Creator: Kris Schwab